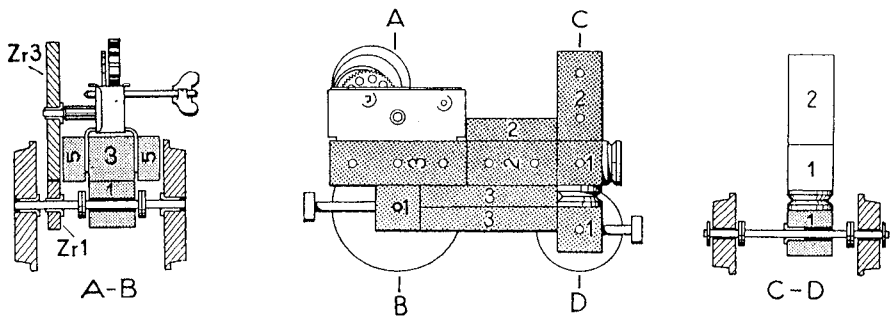
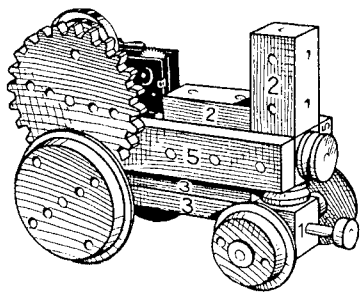


mit Federmotor
und fahrrädern

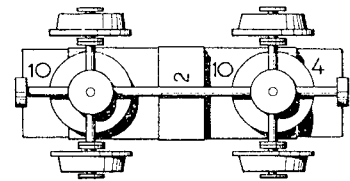
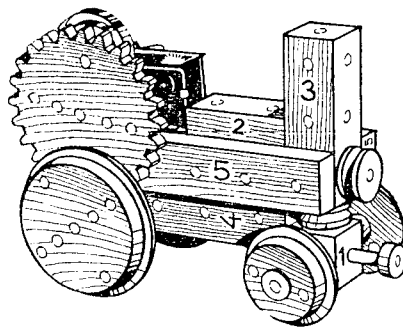
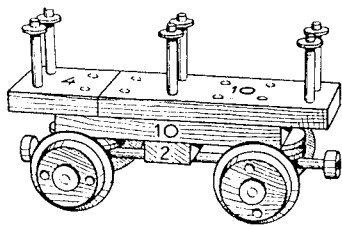
55/1 Lokomotive gebaut aus Matador Nr. 0



Zusätzlich verwendet:

- 1 Federmotor
- 2 Spurräder 2
- 2 Spurräder 3
- 1 Zahnrad 1
- 1 Zahnrad 3

55/2 Lokomotive mit Rungenwagen gebaut aus Matador Nr. 1

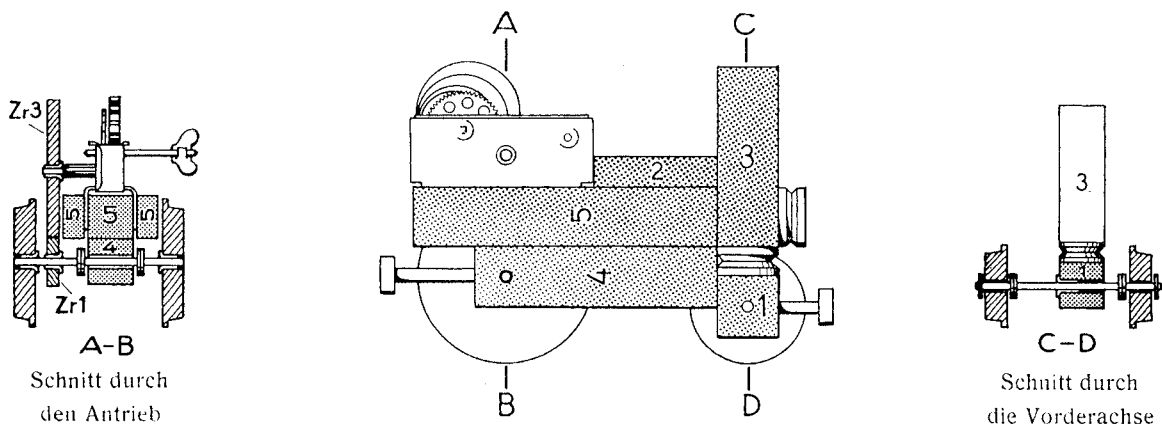


Dieser Rungenwagen kann an die Lokomotive gehängt werden

Ansicht des Rungenwagens von unten

Zusätzlich verwendet:

- 1 Federmotor
- 6 Spurräder 2
- 2 Spurräder 3
- 1 Zahnrad 1
- 1 Zahnrad 3



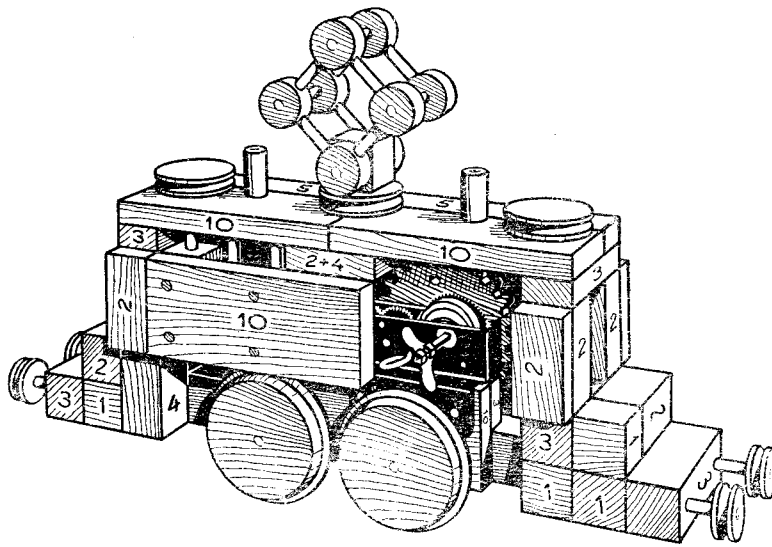
Schnitt durch den Antrieb

Schnitt durch die Vorderachse

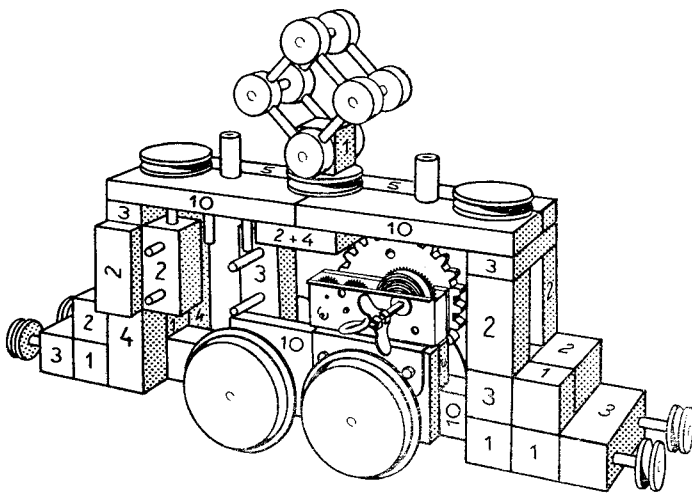
55/4 Elektro-Lok gebaut mit Matador Nr. 4

Zusätzlich verwendet:

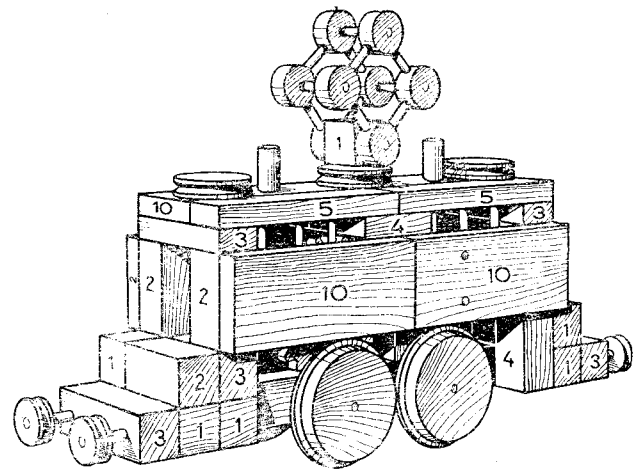
- 1 Federmotor
- 4 Spurräder 3
- 1 Zahnrad 1
- 1 Zahnrad 3



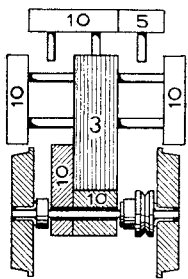
Die rechte Seite



Ansicht bei abgehobener Zehner-Platte

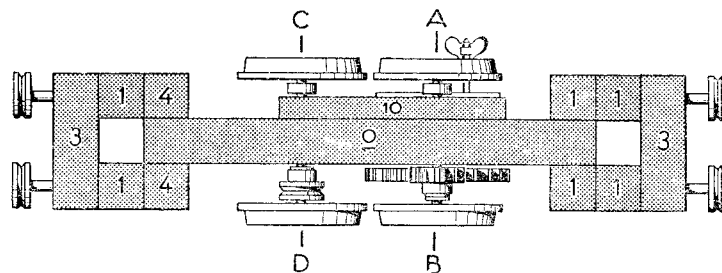


Die linke Seite

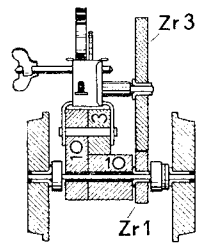


C-D

Schnitt durch die Achse C-D

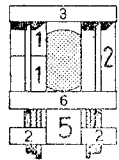
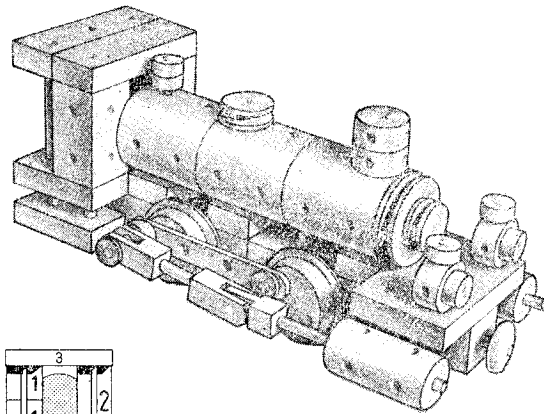


Ansicht von unten gesehen



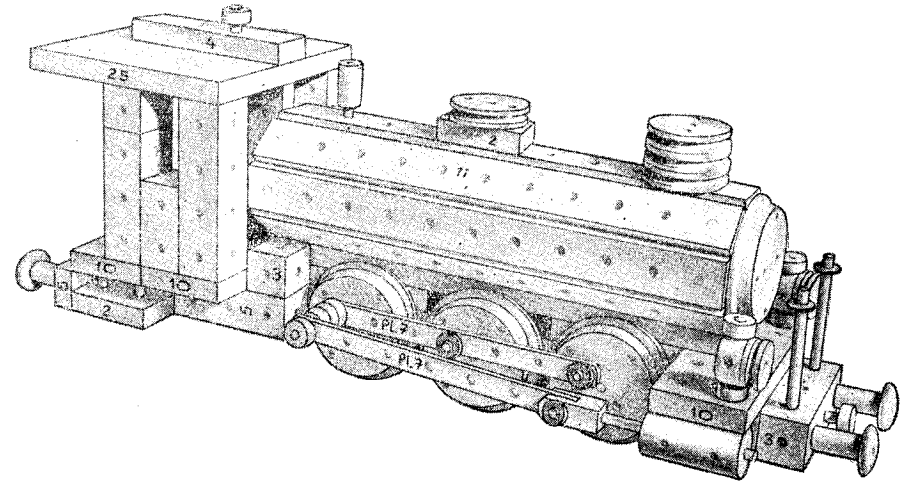
A-B

Schnitt durch den Antrieb



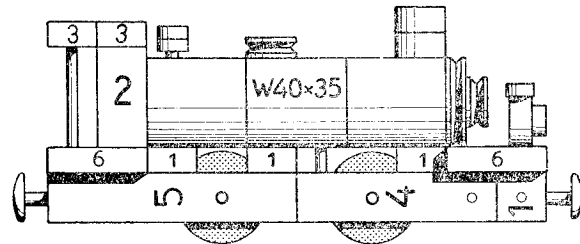
55/6 Lokomotive
gebaut aus Matador Nr. 4

- Zusätzlich verwendet:
- 7 Spurräder 3
 - 2 Lok-Naben 8
 - 8 Streben 11
 - 4 Pleuelstangen 7
 - 2 Gelenke 2
 - 2 Walzen 20 x 40 mm
 - 4 Pufferteller

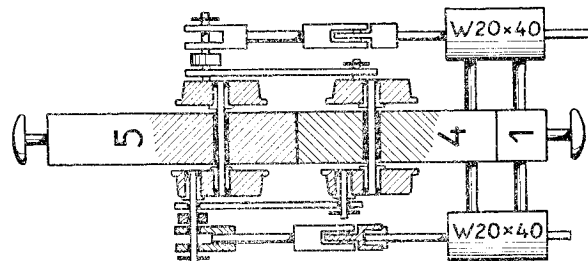


55/5 Lokomotive gebaut aus Matador Nr. 1

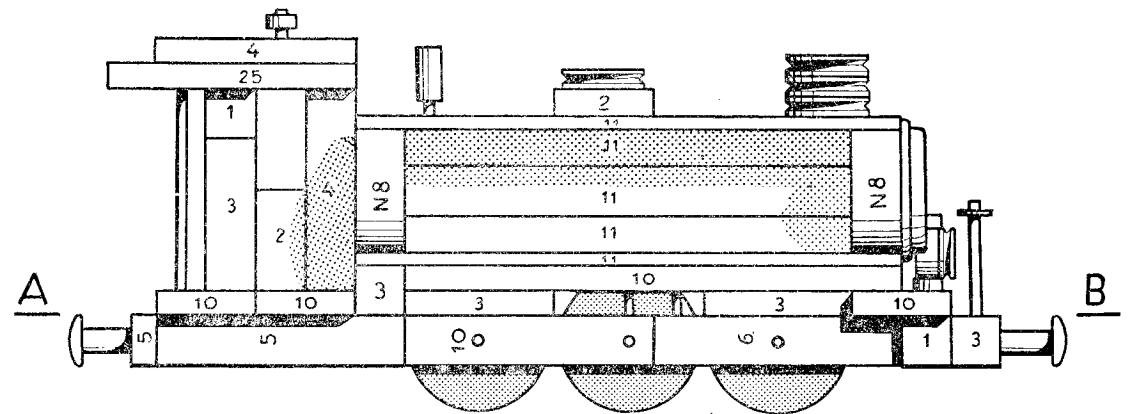
- Zusätzlich verwendet:
- 2 Gelenke G 2
 - 4 Spurräder 2
 - 3 Walzen 35 x 40 mm
 - 2 Walzen 20 x 40 mm
 - 2 Kreuzköpfe
 - 2 Pleuelstangen 4 Loch
 - 2 Pufferteller
 - 2 Platten 6
 - 3 Brettchen 1
 - 2 4-Loch-Naben



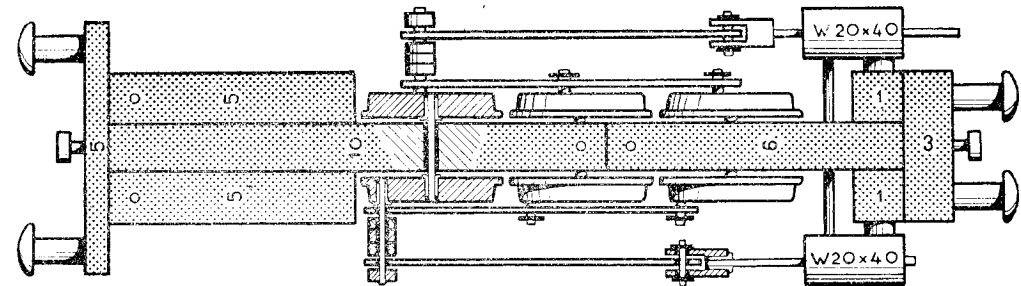
Längsschnitt



Horizontalschnitt

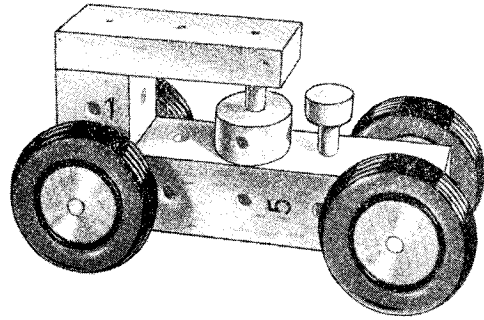


Längsschnitt

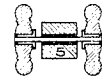


A-B
Horizontalschnitt

55/8 Auto

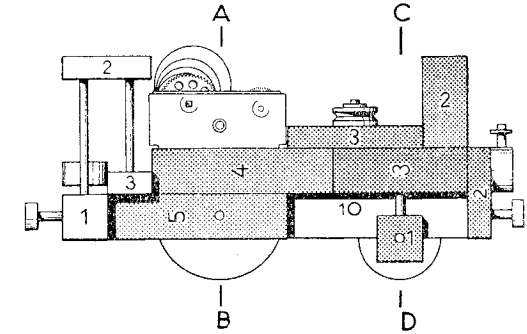
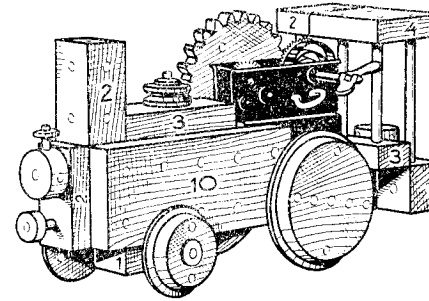


- Bestehend aus:
- 1 Brettchen 3
 - 1 Klotz 1
 - 1 Klotz 5
 - 1 4-Loch-Nabe
 - 4 Autorädern Nr. 2
 - 1 Holzvorstecker
 - 4 Klemmhülsen
 - 2 Achsen 60 mm lang
 - Diverse Verbindungsstäbe



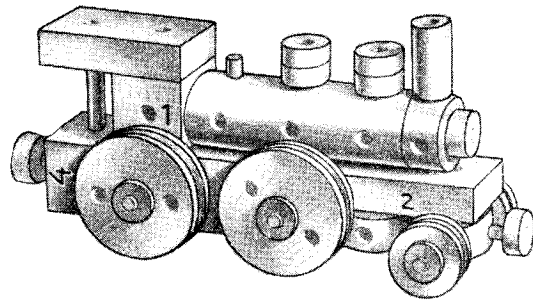
Die Räder werden mit Klemmhülsen befestigt

55/3 Lokomotive mit Güterwagen gebaut aus Matador Nr. 2

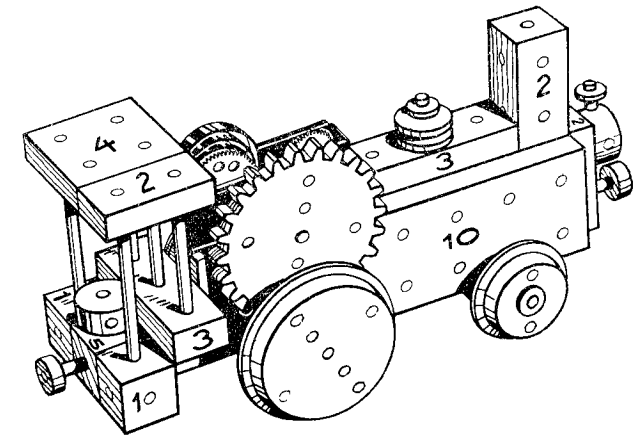
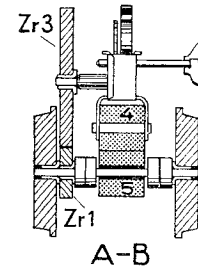
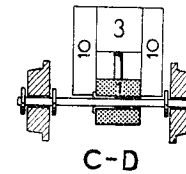
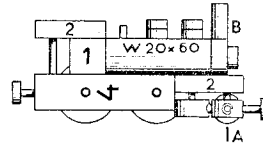
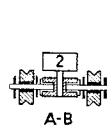


- Zusätzlich verwendet:
- 2 Spurräder 3
 - 1 Federmotor
 - 6 Spurräder 2
 - 1 Zahnrad 1
 - 1 Zahnrad 3

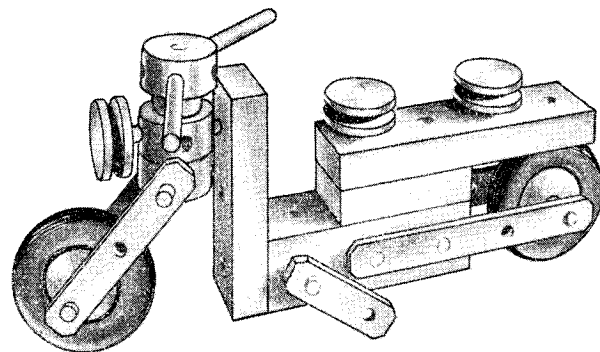
55/9 Lokomotive



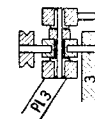
- Bestehend aus:
- 1 Walze 20x60 mm
 - 1 Klotz 1
 - 1 Klotz 4
 - 2 Brettchen 2
 - 4 Rädern 2
 - 3 Naben 4
 - 1 Muffe
 - 7 Holzvorstecker
 - 2 Klemmhülsen
 - 2 Achsen 30 mm
 - 2 Achsen 60 mm
 - Diverse Verbindungsstäbe



55/7 Roller aus Matador

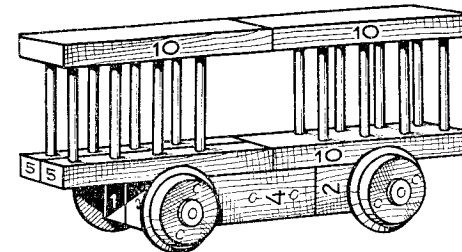


- Bestehend aus:
- 2 Autorädern 2
 - 1 Brettchen 2
 - 1 Brettchen 3
 - 1 Brettchen 4
 - 1 Klotz 3
 - 1 Pleuelstange 2
 - 2 Pleuelstangen 3
 - 2 Pleuelstangen 4
 - 3 Rädern 1
 - 2 4-Loch-Naben
 - 1 5-Loch-Nabe
 - 6 Klemmhülsen
 - 2 Achsen 30 mm
 - 1 Achse 40 mm
 - Diverse Verbindungsstäbe



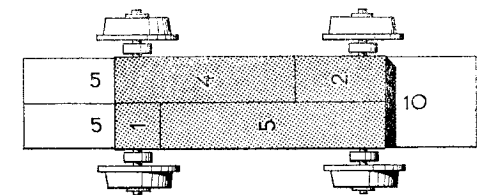
Die Achsen werden mit Klemmhülsen befestigt ↑

Lenkung



Der Güterwagen

Die Lokomotive allein ist aus Nr. 1 zu bauen



Ansicht von unten